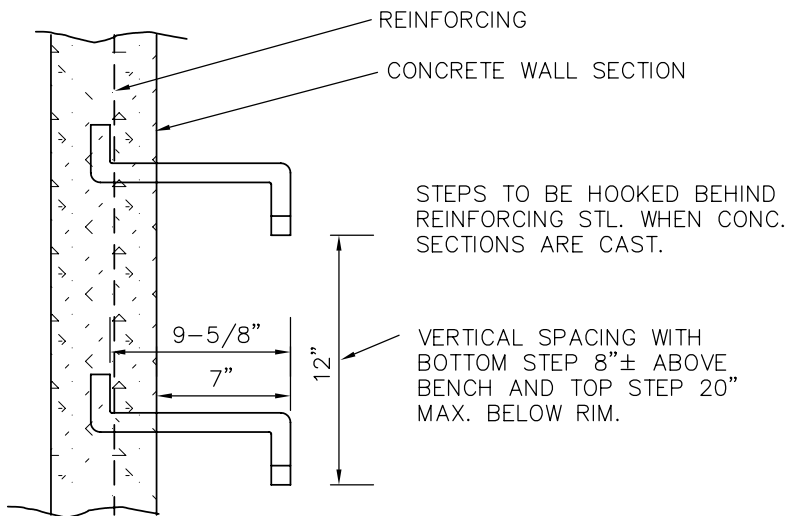


SECTION A-A

ALUMINUM STEP

NOTES:

1. ALUMINUM ALLOY SPECS.
  - A. FED. SPEC. QQ-A-200/8
  - B. MIN. TENSILE STRENGTH = 38,000 PSI
  - C. MIN. YIELD STRENGTH = 35,000 PSI
  - D. MIN. ELONGATION = 10% IN 2"
2. MIN. LOAD CAPACITY (APPLIED CENTER OF STEP).
  - A. 1000 lb. WITH 6" PROJECTION FROM WALL.
  - B. 1500 lb. WITH 4" PROJECTION FROM WALL.
3. WEIGHT PER STEP = 2.23 lbs.
4. STEPS TO BE PLACED BEHIND REINFORCING STEEL WHEN CONCRETE SECTIONS ARE CAST. DO NOT STAGGER.



TYPICAL INSTALLATION

No. XREFS  
I:\Key\_Std\SAS\Details\dwg\Sasd-PUB-6s.dwg

**Kennedy/Jenks Consultants**

**Engineers & Scientists**

143 Union Boulevard  
Suite 600  
LakeWood, CO 80228  
303 985 3636 TEL  
303 985 3600 FAX



**SOUTH ARAPAHOE**  
SANITATION DISTRICT

www.southarapahoe.org

**ALUMINUM  
STEP DETAIL**

DRAWING NO.: SASD-PUB-6S DATE: 5/08