

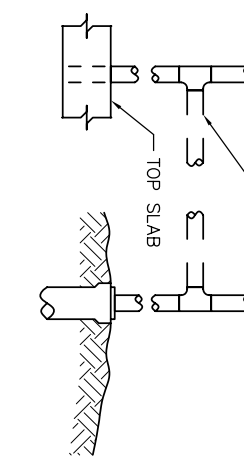
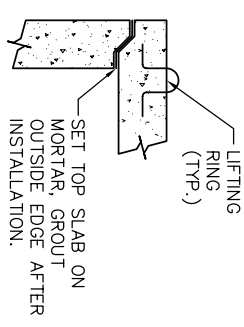
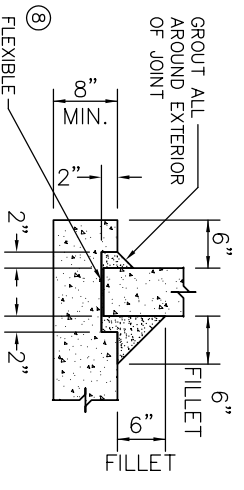
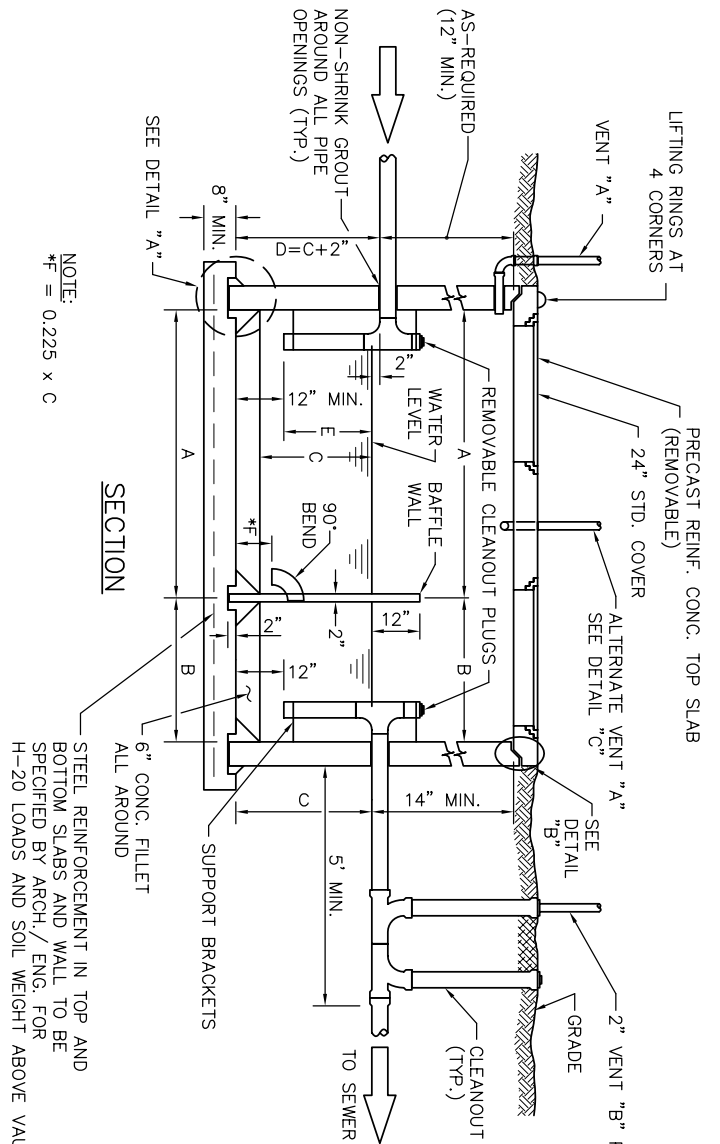
| RATE OF FLOW (G.P.M.) | APPROX. TOTAL WTR. CAP. (CU.FT.) | DIMENSIONS TWO COMPARTMENT TANK (INCHES) |     |      |      |      |     |
|-----------------------|----------------------------------|--|-----|------|------|------|-----|
|                       |                                  | W  | L   | A    | B    | C    | D   |
| 5                     |                                  |  |     |      |      |      |     |
| 10                    | 25                               | 50                                       | 75  | 100  | 107  | 800  | 41  |
| 15                    | 32                               | 64                                       | 96  | 128  | 160  | 1120 | 57  |
| 20                    | 40                               | 80                                       | 107 | 143  | 184  | 1500 | 72  |
| 25                    | 48                               | 96                                       | 128 | 171  | 216  | 1500 | 84  |
| 30                    | 56                               | 112                                      | 150 | 200  | 250  | 1500 | 96  |
| 35                    | 64                               | 128                                      | 160 | 224  | 280  | 1500 | 108 |
| 40                    | 72                               | 144                                      | 180 | 256  | 320  | 1500 | 120 |
| 45                    | 80                               | 160                                      | 200 | 288  | 360  | 1500 | 132 |
| 50                    | 88                               | 176                                      | 224 | 320  | 400  | 1500 | 144 |
| 55                    | 96                               | 192                                      | 240 | 352  | 440  | 1500 | 156 |
| 60                    | 104                              | 208                                      | 256 | 384  | 480  | 1500 | 168 |
| 65                    | 112                              | 224                                      | 272 | 416  | 520  | 1500 | 180 |
| 70                    | 120                              | 240                                      | 288 | 448  | 560  | 1500 | 192 |
| 75                    | 128                              | 256                                      | 304 | 480  | 600  | 1500 | 204 |
| 80                    | 136                              | 272                                      | 320 | 512  | 640  | 1500 | 216 |
| 85                    | 144                              | 288                                      | 336 | 544  | 680  | 1500 | 228 |
| 90                    | 152                              | 304                                      | 352 | 576  | 720  | 1500 | 240 |
| 95                    | 160                              | 320                                      | 368 | 608  | 760  | 1500 | 252 |
| 100                   | 168                              | 336                                      | 384 | 640  | 800  | 1500 | 264 |
| 105                   | 176                              | 352                                      | 400 | 672  | 840  | 1500 | 276 |
| 110                   | 184                              | 368                                      | 416 | 704  | 880  | 1500 | 288 |
| 115                   | 192                              | 384                                      | 432 | 736  | 920  | 1500 | 300 |
| 120                   | 200                              | 400                                      | 448 | 768  | 960  | 1500 | 312 |
| 125                   | 208                              | 416                                      | 464 | 800  | 1000 | 1500 | 324 |
| 130                   | 216                              | 432                                      | 480 | 832  | 1040 | 1500 | 336 |
| 135                   | 224                              | 448                                      | 496 | 864  | 1080 | 1500 | 348 |
| 140                   | 232                              | 464                                      | 512 | 896  | 1120 | 1500 | 360 |
| 145                   | 240                              | 480                                      | 528 | 928  | 1160 | 1500 | 372 |
| 150                   | 248                              | 496                                      | 544 | 960  | 1200 | 1500 | 384 |
| 155                   | 256                              | 512                                      | 560 | 992  | 1240 | 1500 | 396 |
| 160                   | 264                              | 528                                      | 576 | 1024 | 1280 | 1500 | 408 |
| 165                   | 272                              | 544                                      | 592 | 1056 | 1320 | 1500 | 420 |
| 170                   | 280                              | 560                                      | 608 | 1088 | 1360 | 1500 | 432 |
| 175                   | 288                              | 576                                      | 624 | 1120 | 1400 | 1500 | 444 |
| 180                   | 296                              | 592                                      | 640 | 1152 | 1440 | 1500 | 456 |
| 185                   | 304                              | 608                                      | 656 | 1184 | 1480 | 1500 | 468 |
| 190                   | 312                              | 624                                      | 672 | 1216 | 1520 | 1500 | 480 |
| 195                   | 320                              | 640                                      | 688 | 1248 | 1560 | 1500 | 492 |
| 200                   | 328                              | 656                                      | 704 | 1280 | 1600 | 1500 | 504 |
| 205                   | 336                              | 672                                      | 720 | 1312 | 1640 | 1500 | 516 |
| 210                   | 344                              | 688                                      | 736 | 1344 | 1680 | 1500 | 528 |
| 215                   | 352                              | 704                                      | 752 | 1376 | 1720 | 1500 | 540 |
| 220                   | 360                              | 720                                      | 768 | 1408 | 1760 | 1500 | 552 |
| 225                   | 368                              | 736                                      | 784 | 1440 | 1800 | 1500 | 564 |
| 230                   | 376                              | 752                                      | 800 | 1472 | 1840 | 1500 | 576 |
| 235                   | 384                              | 768                                      | 816 | 1504 | 1880 | 1500 | 588 |
| 240                   | 392                              | 784                                      | 832 | 1536 | 1920 | 1500 | 600 |
| 245                   | 400                              | 800                                      | 848 | 1568 | 1960 | 1500 | 612 |
| 250                   | 408                              | 816                                      | 864 | 1600 | 2000 | 1500 | 624 |

NOTE: (A-1) MINIMUM ALLOWABLE RETENTION TIME FOR TYPE "A" INTERCEPTOR = 3 MINUTES.  
 (A-2) MINIMUM ALLOWABLE TOTAL WATER CAPACITY FOR TYPE "A" INTERCEPTOR = 300 GALLONS.

### TYPE "B" HIGH RATE CAPACITY CHART

| RATE OF FLOW (G.P.M.) | APPROX. TOTAL WTR. CAP. (GALLONS) | APPROX. WATER CAPACITY/FT. DEPTH |      |      |      |      |  |
|-----------------------|-----------------------------------|----------------------------------|------|------|------|------|--|
|                       |                                   | C                                | D    | E    | F    |      |  |
| 25                    | 50                                | 75                               | 100  | 150  | 200  | 250  |  |
| 30                    | 60                                | 90                               | 120  | 180  | 240  | 300  |  |
| 35                    | 70                                | 105                              | 140  | 210  | 280  | 350  |  |
| 40                    | 80                                | 120                              | 160  | 240  | 320  | 400  |  |
| 45                    | 90                                | 135                              | 180  | 270  | 360  | 450  |  |
| 50                    | 100                               | 150                              | 200  | 300  | 400  | 500  |  |
| 55                    | 110                               | 165                              | 220  | 330  | 440  | 550  |  |
| 60                    | 120                               | 180                              | 240  | 360  | 480  | 600  |  |
| 65                    | 130                               | 195                              | 260  | 390  | 520  | 650  |  |
| 70                    | 140                               | 210                              | 280  | 420  | 560  | 700  |  |
| 75                    | 150                               | 225                              | 300  | 450  | 600  | 750  |  |
| 80                    | 160                               | 240                              | 320  | 480  | 640  | 800  |  |
| 85                    | 170                               | 255                              | 340  | 510  | 680  | 850  |  |
| 90                    | 180                               | 270                              | 360  | 540  | 720  | 900  |  |
| 95                    | 190                               | 285                              | 380  | 570  | 760  | 950  |  |
| 100                   | 200                               | 300                              | 400  | 600  | 800  | 1000 |  |
| 105                   | 210                               | 315                              | 420  | 630  | 840  | 1050 |  |
| 110                   | 220                               | 330                              | 440  | 660  | 880  | 1100 |  |
| 115                   | 230                               | 345                              | 460  | 690  | 920  | 1150 |  |
| 120                   | 240                               | 360                              | 480  | 720  | 960  | 1200 |  |
| 125                   | 250                               | 375                              | 500  | 750  | 1000 | 1250 |  |
| 130                   | 260                               | 390                              | 520  | 780  | 1040 | 1300 |  |
| 135                   | 270                               | 405                              | 540  | 810  | 1080 | 1350 |  |
| 140                   | 280                               | 420                              | 560  | 840  | 1120 | 1400 |  |
| 145                   | 290                               | 435                              | 580  | 870  | 1160 | 1450 |  |
| 150                   | 300                               | 450                              | 600  | 900  | 1200 | 1500 |  |
| 155                   | 310                               | 465                              | 620  | 930  | 1240 | 1550 |  |
| 160                   | 320                               | 480                              | 640  | 960  | 1280 | 1600 |  |
| 165                   | 330                               | 495                              | 660  | 990  | 1320 | 1650 |  |
| 170                   | 340                               | 510                              | 680  | 1020 | 1360 | 1700 |  |
| 175                   | 350                               | 525                              | 700  | 1050 | 1400 | 1750 |  |
| 180                   | 360                               | 540                              | 720  | 1080 | 1440 | 1800 |  |
| 185                   | 370                               | 555                              | 740  | 1110 | 1480 | 1850 |  |
| 190                   | 380                               | 570                              | 760  | 1140 | 1520 | 1900 |  |
| 195                   | 390                               | 585                              | 780  | 1170 | 1560 | 1950 |  |
| 200                   | 400                               | 600                              | 800  | 1200 | 1600 | 2000 |  |
| 205                   | 410                               | 615                              | 820  | 1230 | 1640 | 2050 |  |
| 210                   | 420                               | 630                              | 840  | 1260 | 1680 | 2100 |  |
| 215                   | 430                               | 645                              | 860  | 1290 | 1720 | 2150 |  |
| 220                   | 440                               | 660                              | 880  | 1320 | 1760 | 2200 |  |
| 225                   | 450                               | 675                              | 900  | 1350 | 1800 | 2250 |  |
| 230                   | 460                               | 690                              | 920  | 1380 | 1840 | 2300 |  |
| 235                   | 470                               | 705                              | 940  | 1410 | 1880 | 2350 |  |
| 240                   | 480                               | 720                              | 960  | 1440 | 1920 | 2400 |  |
| 245                   | 490                               | 735                              | 980  | 1470 | 1960 | 2450 |  |
| 250                   | 500                               | 750                              | 1000 | 1500 | 2000 | 2500 |  |

NOTE: (B-1) MINIMUM ACCEPTABLE RETENTION TIME FOR TYPE "B" INTERCEPTOR = 15 MINUTES.  
 (B-2) MINIMUM ALLOWABLE TOTAL WATER CAPACITY FOR TYPE "B" INTERCEPTOR = 1500 GALLONS.  
 (B-3) A=8'-0", B=4'-0", W=6'-0" (TYP.).



- GENERAL NOTES:
- THESE STANDARD DETAILS SHALL ONLY BE CONSTRUCTED TO SHOW CONCEPTUAL AND STANDARD DIMENSIONAL REQUIREMENTS FOR GREASE INTERCEPTOR AND SHALL NOT BE USED FOR CONSTRUCTION. THE ARCHITECT/ENGINEER SHALL FURNISH STRUCTURAL DESIGN CRITERIA, HYDRAULIC LOADING, VOLUME & RETENTION TIME REQUIREMENTS AND DETAILED CONSTRUCTION DRAWINGS, INCLUDING SITE PLAN FOR APPROVAL PRIOR TO CONSTRUCTION.
  - SECONDARY TANK HAS VOLUME EQUAL TO 1/3 OF TOTAL CAPACITY.
  - ALL PIPE AND FITTINGS TO BE SCHEDULE 40 PVC EXCEPT WHERE NOTED OTHERWISE AND SHALL BE 4" MINIMUM DIAMETER.
  - WELLS, BOTTOM AND TOP SLAB TO BE REINFORCED THROUGHOUT. ADDITIONAL DIAGONAL REINFORCING TOP AND BOTTOM IS REQUIRED AROUND ACCESS OPENINGS. ALL REBAR SHALL HAVE A 3" MINIMUM COVER TO FACE OF CONCRETE.
  - THICKNESS OF WALLS, BOTTOM AND TOP SLAB TO BE DETERMINED FROM STRUCTURAL LOADING REQUIREMENTS BY ARCHITECT/ENGINEER. CAST-IN-PLACE BOTTOM SLAB SHALL NOT BE LESS THAN 8" THICK.
  - INLET AND OUTLET PIPE SIZES SHALL BE DETERMINED BY ARCHITECT/ENGINEER BUT SHALL NOT BE LESS THAN 4" DIAMETER (OUTLET PIPE INVERT TO BE 2" LOWER THAN INLET).
  - REINFORCED CONCRETE BOTTOM SLAB SHOWN. (MAY BE INTEGRALLY CAST WITH PRE-CAST WALL SECTIONS AT CONTRACTOR'S OPTION).
  - ALL JOINTS IN PRE-CAST SECTIONS TO BE SEALED WITH FLEXIBLE PLASTIC JOINT SEALING COMPOUND TO FED. SPEC. S-SS-C0210 (EXCEPT TOP SLAB).
  - VENT PIPE MATERIALS AND LOCATION SHALL BE IN ACCORDANCE WITH THE PLUMBING CODE.
  - ROUND OR CIRCULAR GREASE INTERCEPTOR WILL REQUIRE SPECIAL DESIGN AND APPROVAL.
  - PRE-CAST CONCRETE SHAPES ARE SHOWN: CAST-IN-PLACE CONCRETE STRUCTURE IS OPTIONAL.
  - PRE-CAST REINFORCED CONCRETE SECTIONS SHALL BE IN ACCORDANCE WITH ASTM-C-478.
  - DESIGN CRITERIA: (MINIMUM)  
 UNIT WEIGHT OF "SOIL"  
 EQUIVALENT FLUID PRESSURE LEVELS (IF APPLICABLE)  
 CONCRETE STRENGTH (F'c)(TYPE II CEMENT) 4000 PSI
  - TOP SLAB MAY BE ONE PIECE OF MULTIPLE SEGMENT CONSTRUCTION AT CONTRACTOR'S OPTION.
  - SUPPORT BRACKETS AND CLEAN-OUT PLUGS SHALL BE BRASS
  - OTHER VARIOUS COMBINATIONS OF TANK DIMENSIONS MAY BE SUBMITTED FOR APPROVAL, PROVIDED THAT ANY ALTERNATE DESIGN SHALL HAVE THE SAME BASIC PROPORTIONAL DIMENSIONS, COMPARABLE VOLUMES AND FUNCTIONAL CAPABILITIES AS THESE STANDARD DETAILS.
  - DRAWINGS ARE NOT TO SCALE.

**Kennedy/Jenks Consultants**  
 Engineers & Scientists

143 Union Boulevard  
 Suite 600  
 Lakewood, CO 80228  
 303 985 8686 TEL.  
 303 985 3900 FAX.

**SOUTH ARAPAHOE**  
 SANITATION DISTRICT

www.southarapahoehoe.org

**LOW & HIGH RATE**  
 COMMERCIAL GREASE  
 INTERCEPTOR

DRAWING NO.: SASD-PRI-7S DATE: 5/08